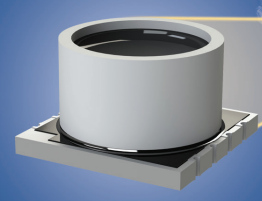
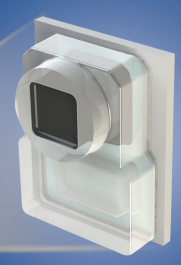
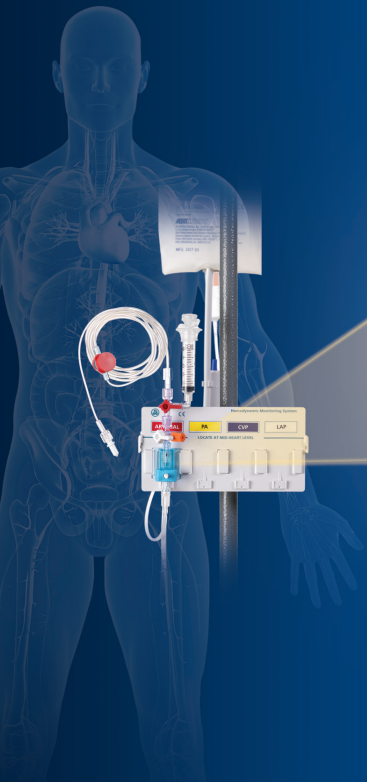
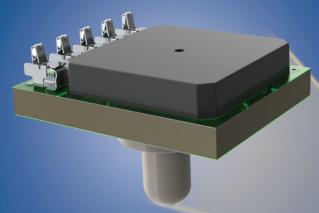


# MERIT SENSOR™



MEMS PRESSURE SENSORS

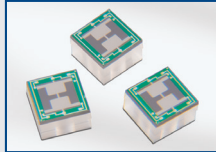


# MERIT SENSOR™

## MEMS SENSING ELEMENTS

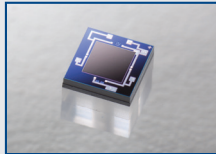
### L Series

psi	0.15–1
mbar	10.3–68.9
kPa	1–6.9
size (mm)	3.3 x 3.3



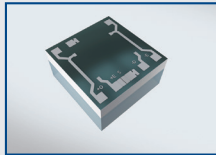
### J Series

psi	1–300
bar	0.07–21
kPa	7–2,100
size (mm)	1.95 x 1.95



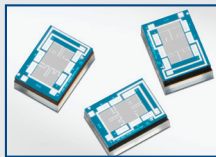
### S Series

psi	5–300
bar	0.34–21
kPa	34–2,068
size (mm)	1.5 x 1.5



### 7000 Series

psi	15–10,000
bar	1–34.5
kPa	103–3,447
size (mm)	2.2 x 1.6



### HM Series

psi	15–500
bar	1–34.5
kPa	103–3,447
size (mm)	2.08 x 2.08

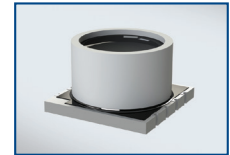


## UNCOMPENSATED PACKAGES

### MS Series

surface mountable

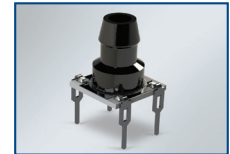
psi	5–500
bar	0.34–34.5
kPa	34.5–3,447
temp (°C)	-40–85



### PMD Series

thru-hole mountable

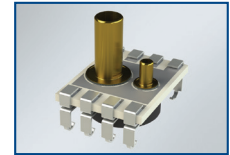
psi	5–60
bar	0.34–4.1
kPa	34.5–414
temp (°C)	-40–125



### DPD Series

dual die differential

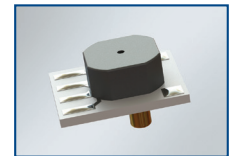
psi	3psig / 100psia
bar	210mbarG / 6,89barA
kPa	21kPa G / 689kPa A
temp (°C)	-40+125°C



### RS Series

surface mountable

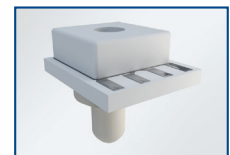
psi	0–500
bar	0–34.47
kPa	0–3,447
temp (°C)	-40–85



### RSH Series

harsh media

psi	0–500
bar	0–34.47
kPa	0–3,447
temp (°C)	-40–150

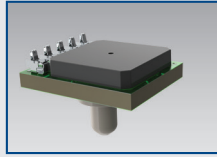


## COMPENSATED PACKAGES

### TRVF Series

wet, harsh media

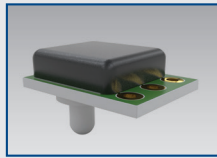
psi	1–500
bar	0.07–34.5
kPa	7–3450
temp (°C)	-40–125



### TVC Series

wet, harsh media

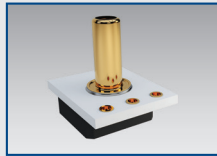
psi	15–300
bar	1–21
kPa	103–2,068
temp (°C)	-40–150



### TR Series

wet, harsh media

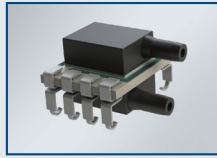
psi	15–500
bar	1–34.5
kPa	103–3,447
temp (°C)	-40–150



### LP Series (1410 & 1420)

ultra-low pressure

psi	0.04–15
mbar	2.49–1,034
kPa	0.25–103
inH <sub>2</sub> O	1–415
temp (°C)	-40–85



### HTS Series

analog & digital

psi	1–100
mbar	68.95–6,895
kPa	6.89–689.5
temp (°C)	-40–125



### CMS Series

highly compact

psi	2–150
bar	0.14 - 10.34
kPa	13.79 - 1,034.21
temp (°C)	-40–85

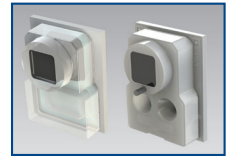


## PASSIVE COMPENSATED PACKAGES

### BP Series / BP+T Series

blood pressure

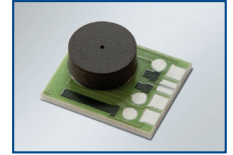
mmHg	-30–300
	-500–900
	(BP extended)
mbar	-40–400
kPa	-4–40
temp (°C)	15–40
temp accuracy	+/-0.5 (°C) (BP+T)



### AP Series

laser-trimmed output

psi	0–500
bar	0–34.5
kPa	0–3,447
temp (°C)	10–40



## CUSTOM ASSEMBLIES

### MSS100

wet, harsh media

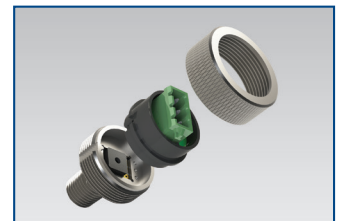
psi	-15–100
bar	-1–6.9
kPa	-103.4–689.5
temp (°C)	10–50



## EVALUATION KITS

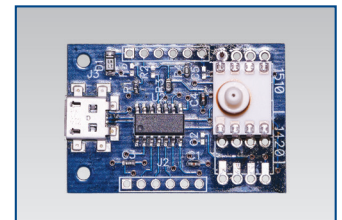
### MeriTREK

TR Series evaluation kit



### miniPEK

LP Series & HTS Series evaluation kit



[www.meritsensor.com](http://www.meritsensor.com)

Merit Sensor owns and operates a MEMS wafer fab as well as assembly areas. These on-site resources, in addition to our 30 years of experience producing piezoresistive pressure sensors, help us provide products that meet the unique needs of our diverse customers. No matter what your application may be, we will help you handle the pressure.



1600 West Merit Parkway  
South Jordan UT 84095  
USA

Sales +1 801 208 4722  
Customer Service +1 801 208 4700  
Email [sales@meritsensor.com](mailto:sales@meritsensor.com)  
[www.meritsensor.com](http://www.meritsensor.com)



**MERIT SENSOR™**

Merit Sensor is a subsidiary of Merit Medical Systems, Inc.

