

# MERIT SENSOR CAPABILITIES

**Custom** Application and industry-specific solutions to match your requirements.

**Technology** Piezoresistive (PRT).

**Pressure Measurement** 5 psi to 15,000 psi. Absolute, gage, differential, vacuum die/chips, uncompensated packages and compensated packages.

**Operating Temperature** -40°C to 150°C via our proprietary Sentium® technology.

**In-House Capabilities** Design and engineering, fabrication and assembly, state-of-the-art facility, comprehensive testing.

**Certifications** ISO certified. All products are RoHS compliant.

**Customer Service** Pro-active notification of any concerns. 24-hour turnaround on all inquiries. 24-hour fly-out to customer site for critical issues.



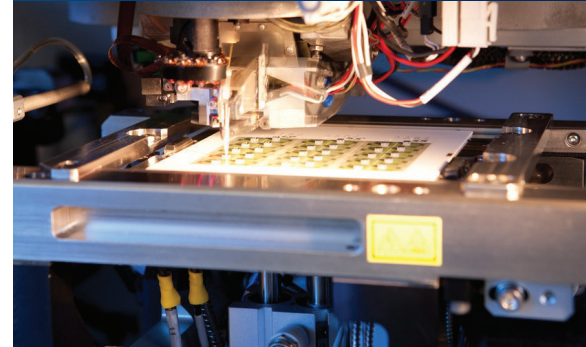
1600 Merit Parkway  
South Jordan  
Utah 84095 USA

Sales +1 801.208.4722  
Customer Service +1 801.208.4700  
Fax +1 801.208.4798  
Email [sensors@merit.com](mailto:sensors@merit.com)

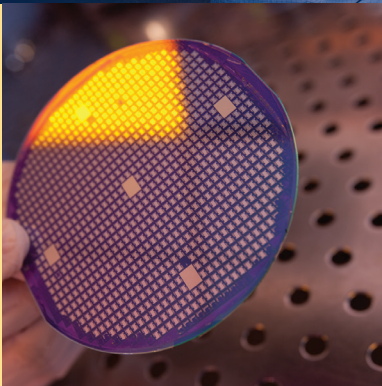
[www.MeritSensor.com](http://www.MeritSensor.com)



## MERIT SENSOR™



Since 1991, clients have been partnering with Merit Sensor Systems to design and manufacture reliable piezoresistive pressure sensor solutions for a variety of applications and industries.

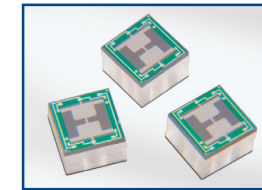


## MEMS SENSING ELEMENTS

### L Series

low pressure

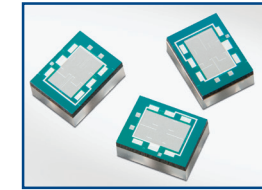
PSI	0.15 – 1
mbar	10.3 – 68.9
KPa	1 – 6.9
Size	3.3 x 3.3 mm



### 3000 Series

low pressure

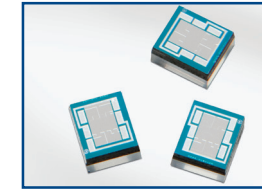
PSI	5 – 100
Bar	0.34 – 7
KPa	34.5 – 689.5
Size	3.3 x 2.5 mm



### 5000 Series

high pressure

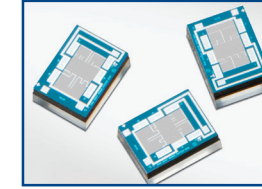
PSI	1,000 – 10,000
Bar	68.9 – 689
KPa	6,895 – 68,948
Size	1.9 x 1.6 mm



### 7000 Series

broad pressure

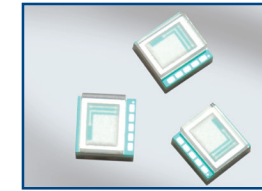
PSI	15 – 500
Bar	1 – 34.5
KPa	103 – 3,447
Size	2.2 x 1.6 mm



### HM Series

harsh media, absolute

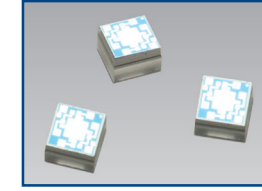
PSI	15 – 500
Bar	1 – 34.5
KPa	103 – 3,447
Size	2.07 x 2.07 mm



### K Series

high pressure

PSI	1,000 – 15,000
Bar	68.9 – 1,034
KPa	6,895 – 103,421
Size	1.4 x 1.4 mm

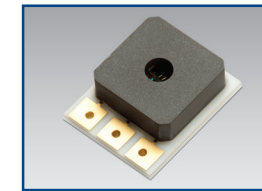


## COMPENSATED PACKAGES

### TR Series

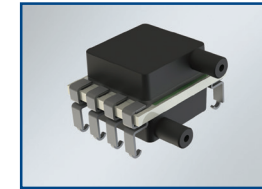
amplified output

PSI	15 – 500
Bar	1 – 34.5
KPa	103 – 3,447
Size	10.16 x 12.7 mm
Temp	-40 – +150 °C



### LP Series Ultra Low Pressure

PSI	0.15 – 1
mbar	10.3 – 68.9
KPa	1 – 6.9
inH <sub>2</sub> O	4.2 – 27.7
Size	10.2 x 13.3 mm
Temp	-40 – + 85°C



## UNCOMPENSATED PACKAGES

### SMD Series

surface-mountable

PSI	5 – 500+
Bar	0.34 – 34.5+
KPa	34.5 – 3,447+
Size	7.6 x 7.6 mm
Temp	-40 – +85 °C



### MS Series

surface-mountable

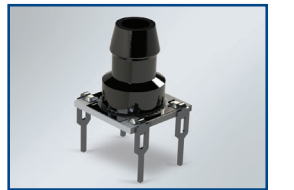
PSI	15 – 500+
Bar	1 – 34.5+
KPa	103 – 3,447
Size	6.4 x 6.4 mm
Temp	-40 – +85 °C



### PMD Series

thru-hole mountable

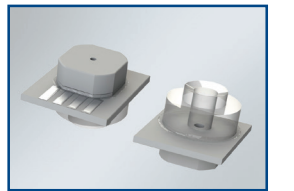
PSI	5 – 50
Bar	0.34 – 3.5
KPa	34.5 – 345
Size	8.1 x 7.6 mm
Temp	-40 – +85 °C



### RPD Series

wide range

PSI	15 – 500
Bar	1 – 34.5
KPa	103 – 3,447
Size	8.9 x 7.6 mm
Temp	-40 – +150 °C



## PASSIVE COMPENSATED PACKAGES

### BP Series

medical blood pressure

mmHg	-30 – 300
PSI	-0.58 – 5.8
mbar	40 – 400
KPa	4 – 40
Size	10.5 x 8.1 mm
Temp	+15 – +40 °C



### AP Series

PSI	-15 – 300
Bar	-1 – 20.7
KPa	-103 – 2,068
Size	12.45 x 14.73 mm
Temp	+10 – +40 °C

